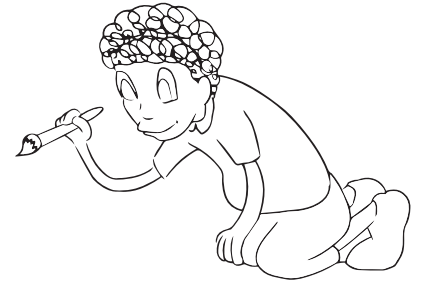


# Como montar



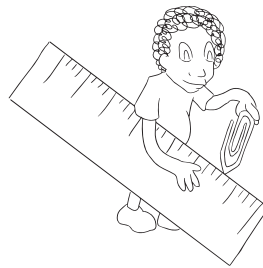
## Materiais:

- estilete/tesoura
- régua
- clipe de papel (para vincar, mas pode ser com o estilete também!)
- cola líquida (recomendo à base de álcool!)
- papel (recomendo offset 240g!)
- e, claro, o arquivo com as páginas do jogo!



## Dicas gerais:

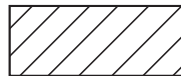
Todas as linhas contínuas  
devem ser cortadas.



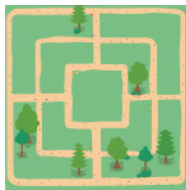
As linhas tracejadas  
devem ser vincadas e  
dobradas.



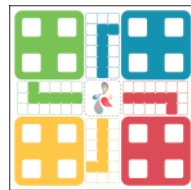
As áreas hachuradas  
devem ser coladas.



## Meu arquivo está completo?



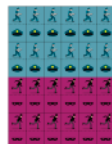
1



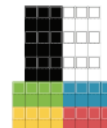
2



3

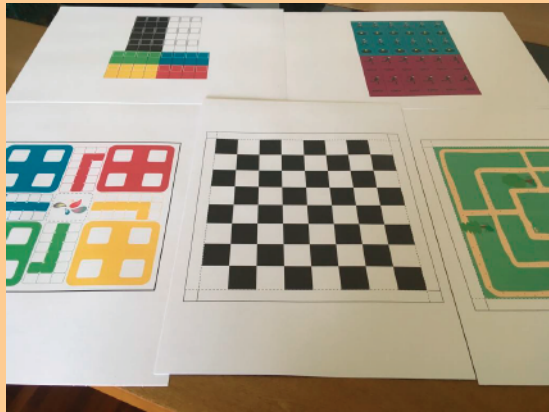


4

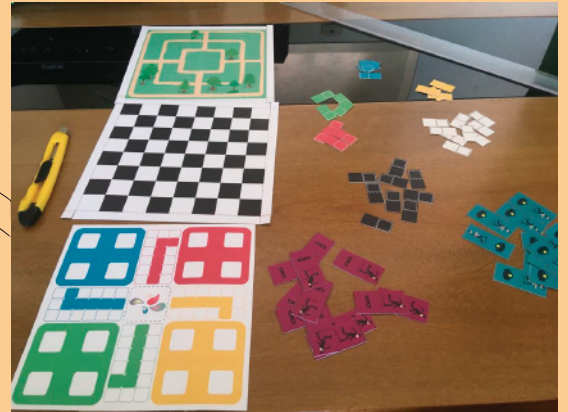


5

# Passo a passo



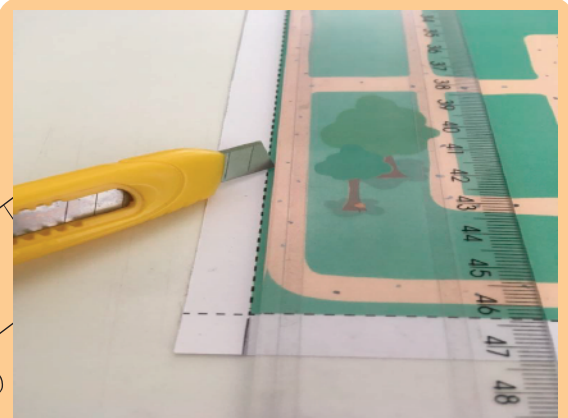
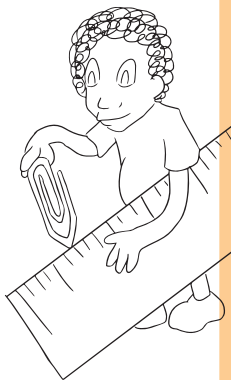
1. Separe as páginas como indicado.



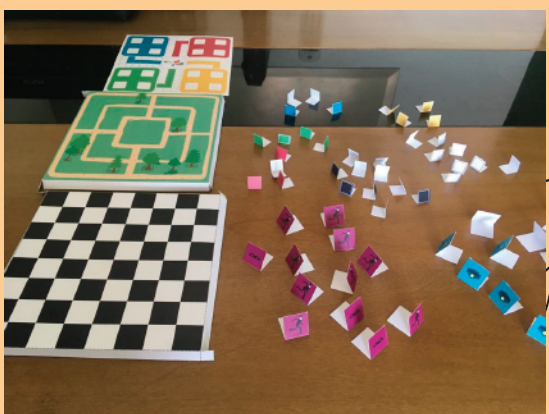
2. Com o estilete, corte as páginas nas linhas contínuas.



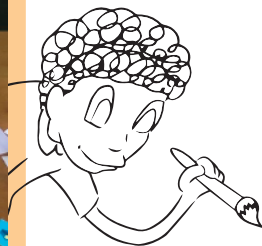
3. As páginas devem ficar assim!



4. Com a ajuda do clipe (ou do estilete), vinque todas as linhas tracejadas. Isso ajuda a dobrar!



5. Após vincar, dobre as abas como mostra a imagem.

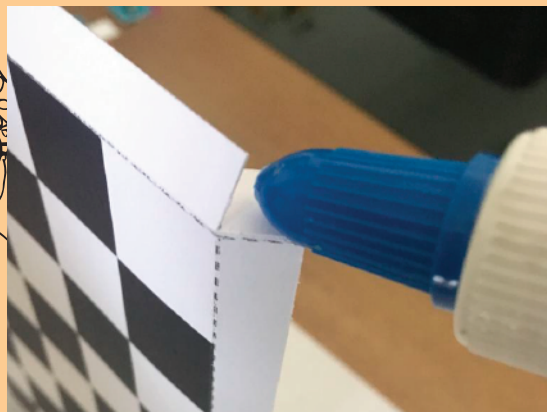
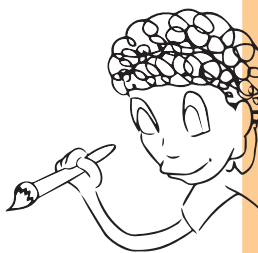


6. Com todas as páginas cortadas, vincadas e dobradas, é hora de colar as peças!

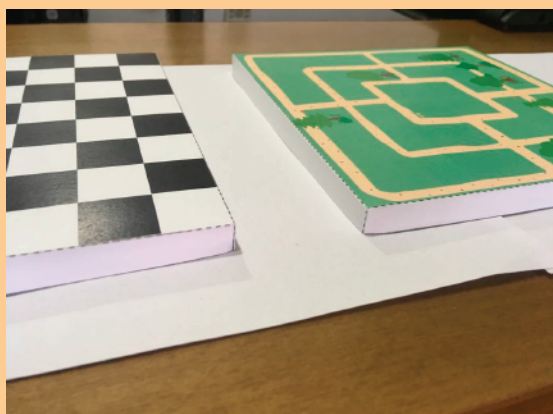
# Passo a passo



7. Cole todas as peças. Elas vão ficar como na figura!



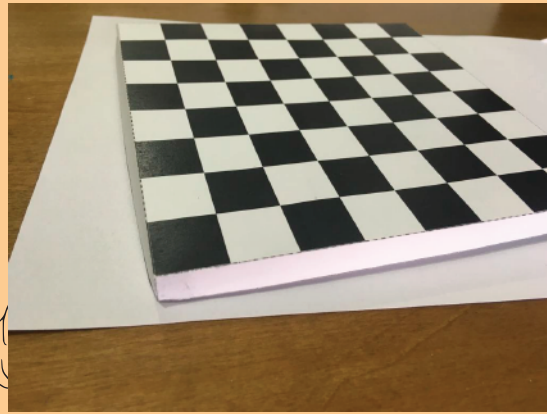
8. Feche cada dobrave passe cola na área indicada.



9. Depois de tudo colado, os tabuleiros devem ficar mais ou menos assim!



10. Coloque as peças e o tabuleiro de ludo dentro de um dos tabuleiros, como indicado.

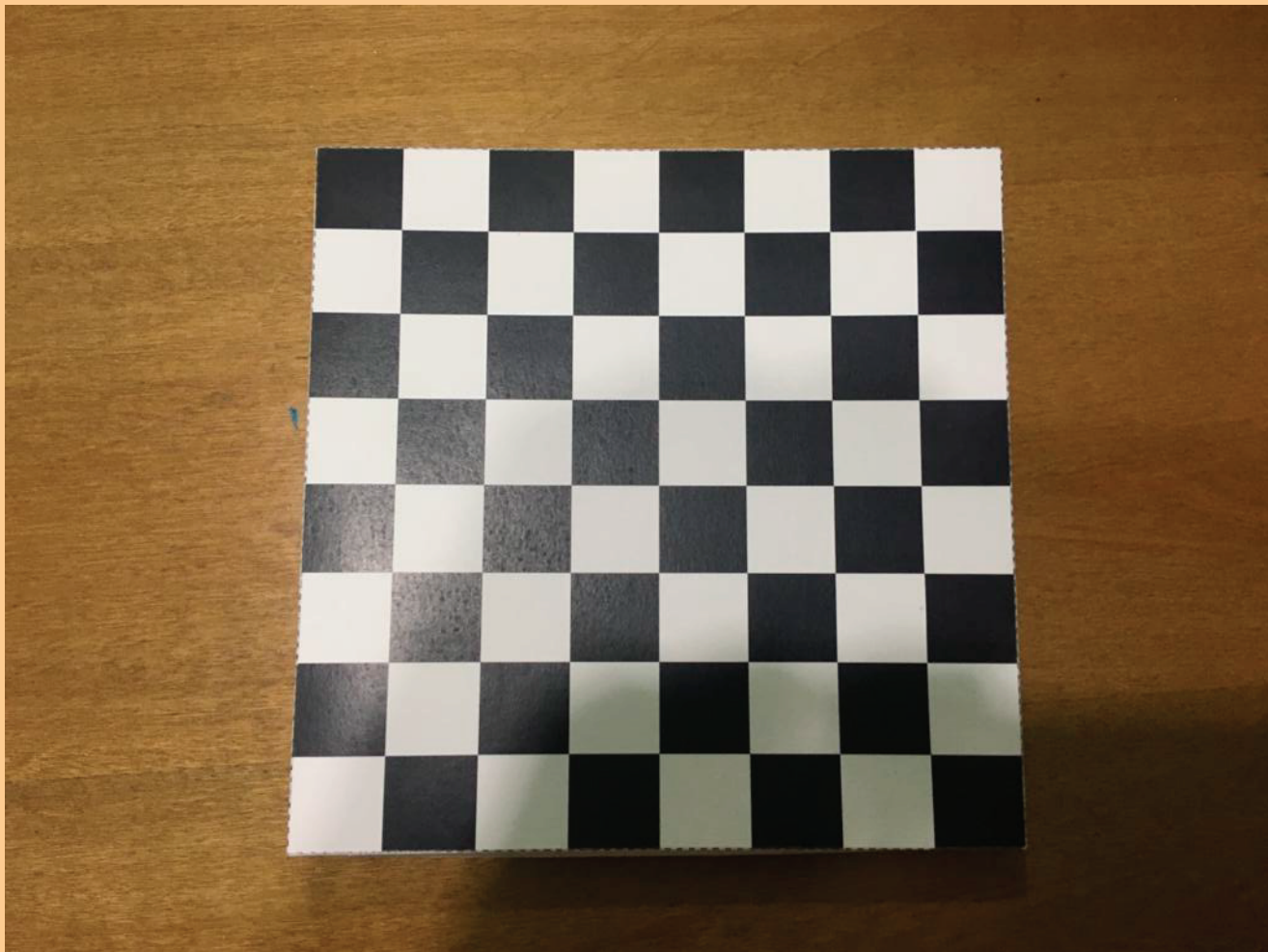


11. Use o outro tabuleiro que sobrou para fechar e formar uma caixa!

## Passo a passo

---

---



Agora é só deixar a cola secar e se divertir com o jogo!

